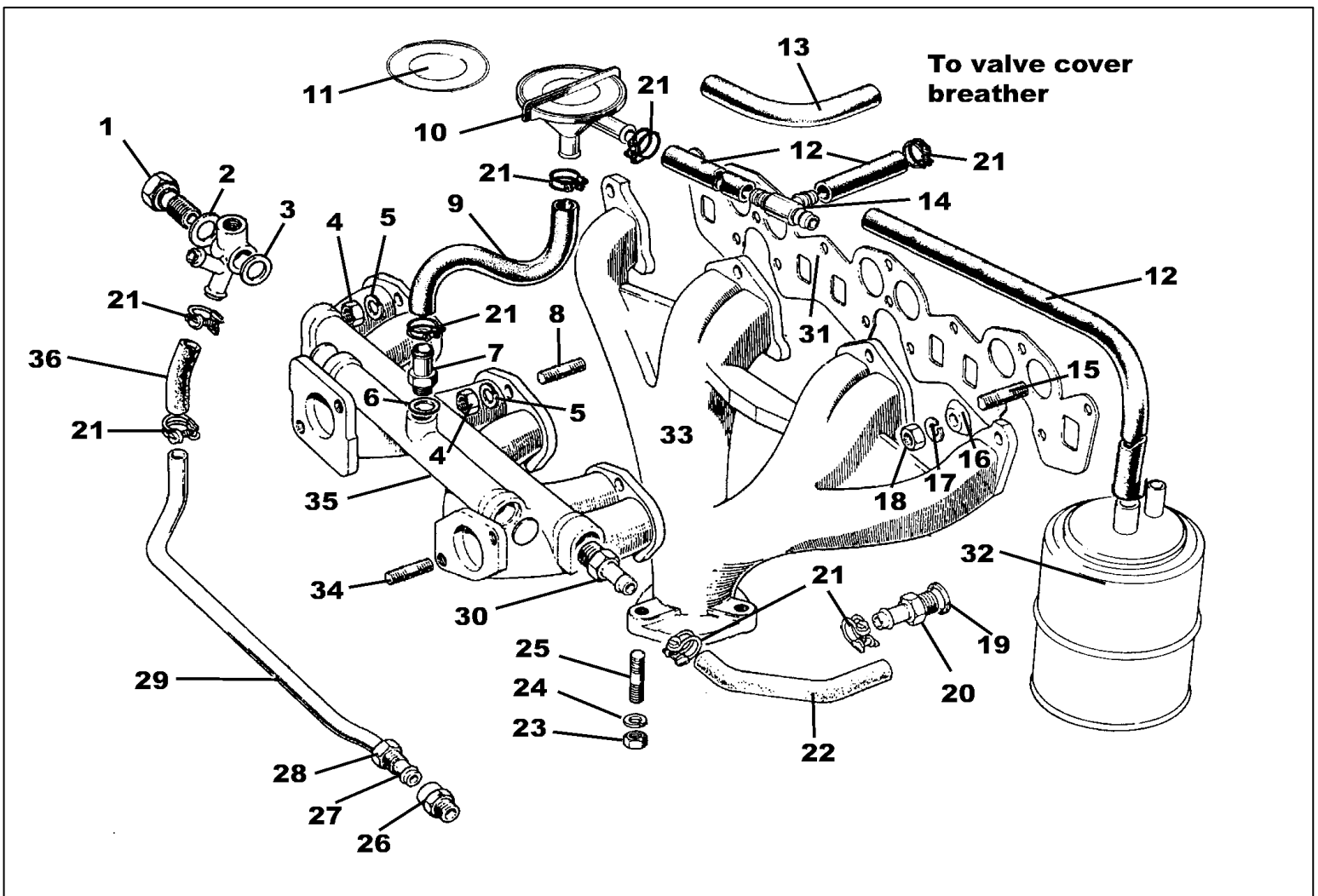


# Intake & Exhaust Manifolds

1) BANJO BOLT	145155	21) CLAMP	CS4012
2) FIBER WASHER	WF534	22) HOSE	137876
3) FIBER WASHER	WF550	23) EXHAUST FLANGE NUT MK1 (3req)	515369
4) NUT (3req)	HN2008	23) EXHAUST FLANGE NUT MK2 & 3 (3req)	108951
5) LOCK WASHER (3req)	WL208	24) WASHER MK1 (3req)	WL208
6) FIBER WASHER	WF513	24) WASHER MK2 & MK3 (3req)	WL209
7) ADAPTER	138530	25) EXHAUST STUD MK1 (3req)	101962
8) INTAKE MANIFOLD STUD (2req MK1,3req MK2,3)	101962	25) EXHAUST STUD MK2 & MK3 (3req)	56561
9) HOSE KC50001 - KF10001	156876	26) ADAPTER	101343
10) EMISSION VALVE KC50001 - KF10001	151658	27) OLIVE	TL11
11) DIAPHRAGM FOR EC VALVE	27H7758	28) SLEEVE NUT	101302
12) HOSE MK3 (sold by the foot)	154213-20	29) WATER PIPE STAINLESS STEEL	217467SS
13) E.C.V HOSE to VALVE COVER KC50001 - 1970	143323	30) ADAPTER	138810
14) T FITTING MK3 to KF10001 (1req)	154211	31) EXHAUST GASKET MK1	AJM613
14) T FITTING MK3 from KF10001 (2req)	154211	31) EXHAUST GASKET MK2 & MK3	GEG682
MANIFOLD MOUNTING BOLT MK1 (6req)	HB913	32) CARBON CANISTER 1971-1973	TKC1331
15) MANIFOLD STUD INNER (6req MK2,3)	105125	33) EXHAUST MANIFOLD MK1	306483/U
15) MANIFOLD STUD OUTER (2req MK1,4req MK2,3)	105124	33) EXHAUST MANIFOLD MK2 & MK3	308290/U
16) MANIFOLD CLAMP MK2 & MK3 (6req)	58258	34) CARBURETOR MOUNTING STUD (4req)	129383
17) LOCK WASHER (10req)	WL209	35) INTAKE MANIFOLD	
18) NUT (10req)	100498	36) HOSE MK1 & MK2	140986
19) WASHER	WF524	36) HOSE MK3	149699
20) ADAPTER	138530		

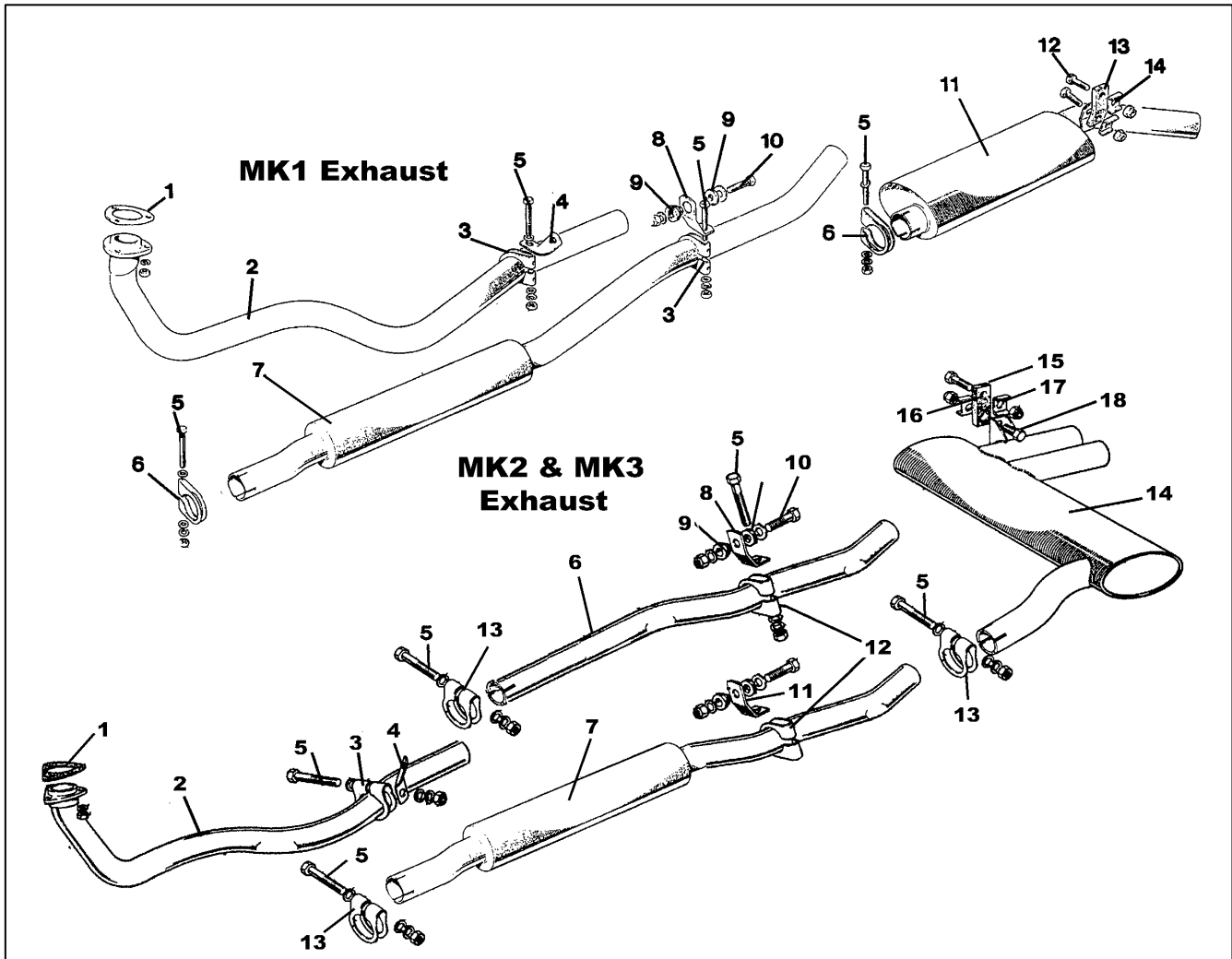


## Exhaust System MK1

1) GASKET	GEG701	8) EXHAUST BRACKET	GEX7496
1a) EXHAUST FLANGE NUT (3req)	515369	9) GROMMET STEPPED & FLAT	GEX7329/30
1b) WASHER (3req)	WL208	10) BOLT, LOCK NUT AND WASHER	EHDW3
2) FRONT PIPE STAINLESS STEEL	BSTH61	11) REAR MUFFLER STAINLESS STEEL	BSTH67
3) CLAMP	GEX7509	12) BOLT, LOCK NUT AND WASHER (2req)	EHDW 2
4) FRONT BRACKET	146163	13) HANGER STRAP (with two metal sleeves)	GEX7359S
5) BOLT, NUT AND WASHERS	EHDW1	14) HANGER PLATE (2req)	105290
6) CLAMP	GEX7506		
7) INTERMEDIATE PIPE STAINLESS STEEL	BSTH62		

## Exhaust System MK2 & MK3

1) GASKET	GEG718	12) CLAMP	GEX7499
2) FRONT PIPE MK2 & MK3 STAINLESS STEEL	TH123	13) CLAMP	GEX7500
3) CLAMP (not english type)	GEX7499	14) REAR MUFFLER MK2	GEX3403
4) FRONT BRACKET	151343	14) REAR MUFFLER MK2 STAINLESS STEEL	BSTH88
5) BOLT LOCK NUT & WASHER	EHDW1	14) REAR MUFFLER MK3	GEX3483
6) INTERMEDIATE PIPE MK2 STAINLESS STEEL	BSTH87	14) REAR MUFFLER MK3 STAINLESS STEEL	TH124
7) INTERMEDIATE PIPE MK3 STAINLESS STEEL	TH130	15) HANGER STRAP (2req)	GEX7359
8) EXHAUST BRACKET MK2	GEX7496	16) SLEEVE (4req)	155249
9) GROMMET STEPPED & FLAT	GEX7329/30	17) HANGER PLATE (4req)	105290
10) BOLT, LOCK NUT AND WASHER	EHDW 3	18) BOLT, NUT AND WASHERS (4req)	EHDW2
11) EXHAUST BRACKET MK3	156660		



## Stainless Steel Systems

STD MK1 GT6 EXHAUST SYSTEM	BSSTH012
SPORT SYSTEM MK1 GT6 (Bell Exhausts)	BSSTH112
STD MK2 GT6 EXHAUST SYSTEM (Bell Exhausts)	BSSTH013
SPORT SYSTEM MK2 AND MK3 GT6 (Bell Exhausts)	BSSTH114
STD MK3 GT6 SYSTEM (Double "S" Exhaust)	TH014

## Sports Exhaust Installation Hardware

SPORTS SYSTEM INSTALL KIT MK1 GT6 (clamps and f	BSIK1
SPORTS SYSTEM INSTALL KIT MK2 & MK3 GT6 (clamp	BSIK2

## Stainless Header Pipes

STAINLESS HEADER MK1	SSHG1
STAINLESS HEADER MK2 & MK3	SSHG2/3

### Bell MK2 & MK3 Stainless Header



### Bell Sports System

