

Rear Differential

1) RUBBER MOUNT UPPER (2req)	133568	16) SHIM	134075
2) RUBBER MOUNT LOWER (2req)	131796	17) GEAR up to FM67065	134073
3) WASHER (2req)	WM810	17) GEAR after FM67065	UKC3365
4) LOCK NUT (2req)	YN3209	18) PINION GEAR up to FM67065	134074
6) PINION OIL SEAL	141242	18) PINION GEAR after FM67066	UKC3365
7) PINION BEARING	134070	19) THRUST WASHER PINION .041"	148805
8) SHIM .010"	140791	19) THRUST WASHER PINION .69 mm (.0271")	UKC4788
8) SHIM .005"	140792	20) CARRIER BEARING up to FM67065 (2req)	GHB105
8) SHIM .003"	140793	20) CARRIER BEARING after FM67065 (2req)	UKC4805
9) PINION SPACER 1971 - 1973	145933	21) SHIM .003	156082
9) PINION SPACER COLLAPSIBLE from1974	156903	21) SHIM .005	156083
10) BOLT & SHAKEPROOF WASHER (4req)	132856/SW	22) USED INNER AXLE SHAFT (2req)	139531USEI
11) BOLT & LOCK WASHER (8req)	HU808/LW	23) OIL SEAL INNER (2req)	117952
12) SHIM .0810"	145922	24) SCREW & WASHER (8req)	123803
12) SHIM .0885"	145927	25) INNER BEARING (2req)	533360A
12) SHIM .0915"	145929	26) CIRCLIP (2req)	139532
12) SHIM .096"	145932	27) REAR MOUNT BUSHING (2req)	117578
13) REAR PINION BEARING	134065	29) GASKET	114749
14) CROSS PIN	UKC4493	30) MOUNTING BOLT, WASHER & LOCK NUT	136869
15) CROWN WHEEL & GEAR 3.89:1	159801	32) STUD (4req)	131008
15) CROWN WHEEL & GEAR 3.63:1	159802	33) WASHER (4req)	WP110
15) CROWN WHEEL & GEAR 4.11:1	D15SPT411	34) LOCK NUT (4req)	YN2909
		35) POLY DIFFERENTIAL FRONT MOUNT KIT	BAC11

Overdrive J Type

1) GASKET ADAPTER GEARBOX	22G1420	32) CLUTCH THRUST BEARING	NKC63
3) NUT & LOCK WASHER (8req)	HN2007/LW	33) REAR LOCK NUT	NKC81
4) GASKET ADAPTER CASING	37H1901	36) REAR OIL SEAL	NKC39
5) CIRCLIP	137308	37) ANNULUS BEARING	SP75G
6) CLIP	159503	38) ANGLE DRIVE	120694
7) OIL PUMP CAM	159505	40) O RING	NKC106
8) KEY	KW316	41) OIL SEAL	NKC105
9) NUT	JS616	42) SPEEDO ADAPTER CONNECTOR (22G1711)	NKC43
10) BRIDGE PIECE	500587	44) GASKET REAR MAIN CASE	NKC86
11) STUD (8req)	NKC57	45) SPEEDO GEAR	NKC46
14) RELIEF VALVE BALL	NKC95	46) FRONT ANNULUS BEARING	SP74G
15) O RING	NKC99	47) REBUILT SOLENOID (\$15.00 Core Charge)	NKC41
16) PLUG	NKC97	48) COPPER WASHER	NKC108
17) FILTER SUCTION	NKC53	49) O RING (2req)	NKC107
18) BOLT & WASHER (6req)	HU705/LW		
19) PLUG	NKC24		
20) SEAL	NKC11		
21) FILTER	NKC23		
22) GASKET	NKC76		
23) GASKET	NKC87		
24) PUMP BODY O RING	NKC100		
25) PUMP PLUG O RING	NKC101A		
26) O RING	NKC102A		
27) O RING (2req)	NKC92		
28) O RING	RTC1949		
29) O RING DASHPOT PLUG	NKC91		
30) BEARING	NKC17		
31) RELINED CLUTCH ASSEMBLY (\$40.00 cc	NKC40		

Rebuilt J Type Overdrive

Rebuilt Overdrives come with a 12 month 12,000 mile warranty.

REBUILT J TYPE O/D (\$200 Core charge)

RKC684

Rebuilt Differentials

REBUILT DIFFERENTIAL 3.89:1 (new ring & pinion) RTC2305N

(above diff comes with a NEW crown wheel & pinion set)

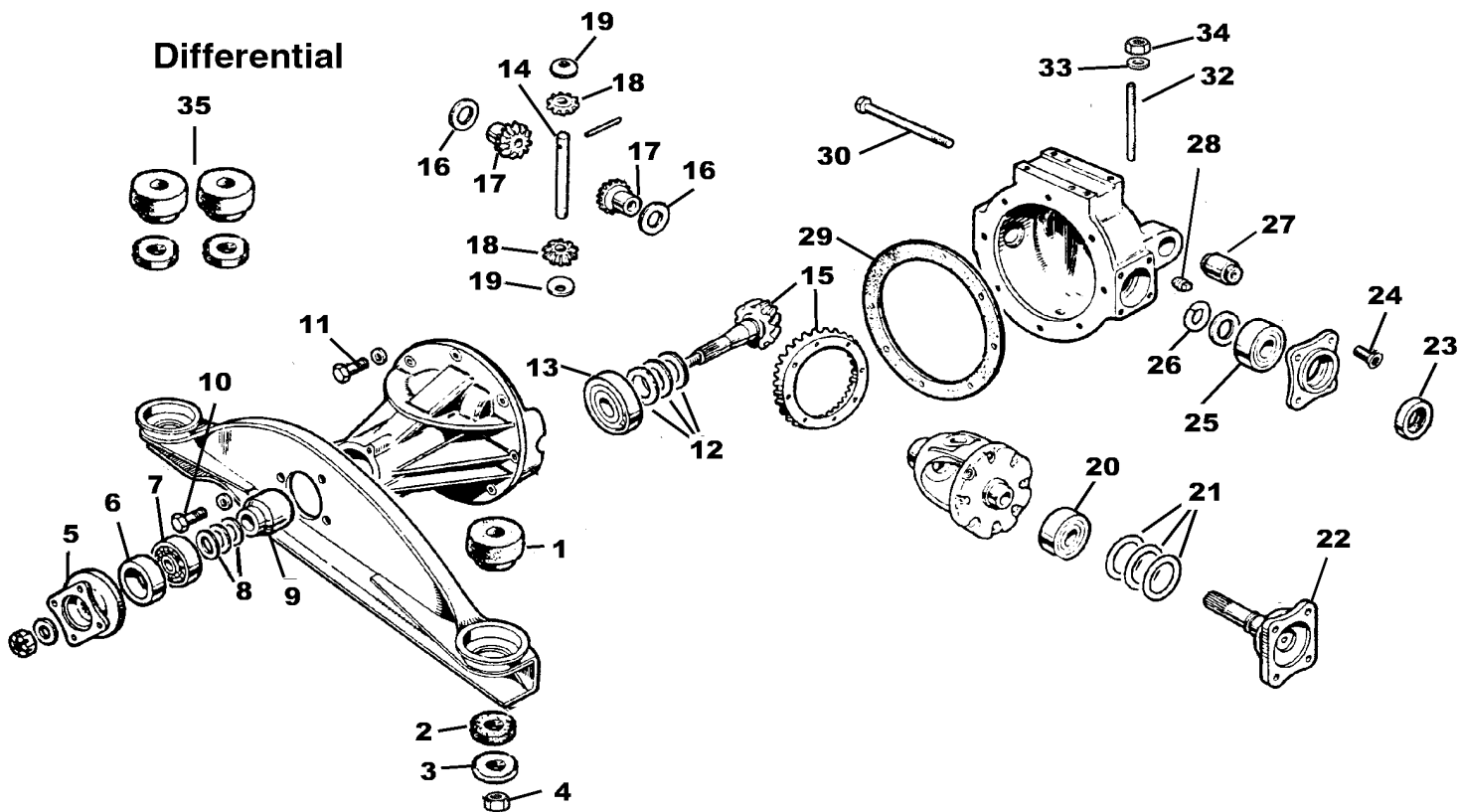
REBUILT DIFFERENTIAL 3.89:1 RTC2305R

REBUILT DIFFERENTIAL 3.63:1 TKC3718R

\$200.00 core charge on rebuilt Differentials.

USE ONLY GL4 OIL in Differentials!!

Differential



J Type Overdrive

